

MONTHLY MEMBERSHIP PROGRESS REPORT

District 201Q2

Results as of: 5/31/2024

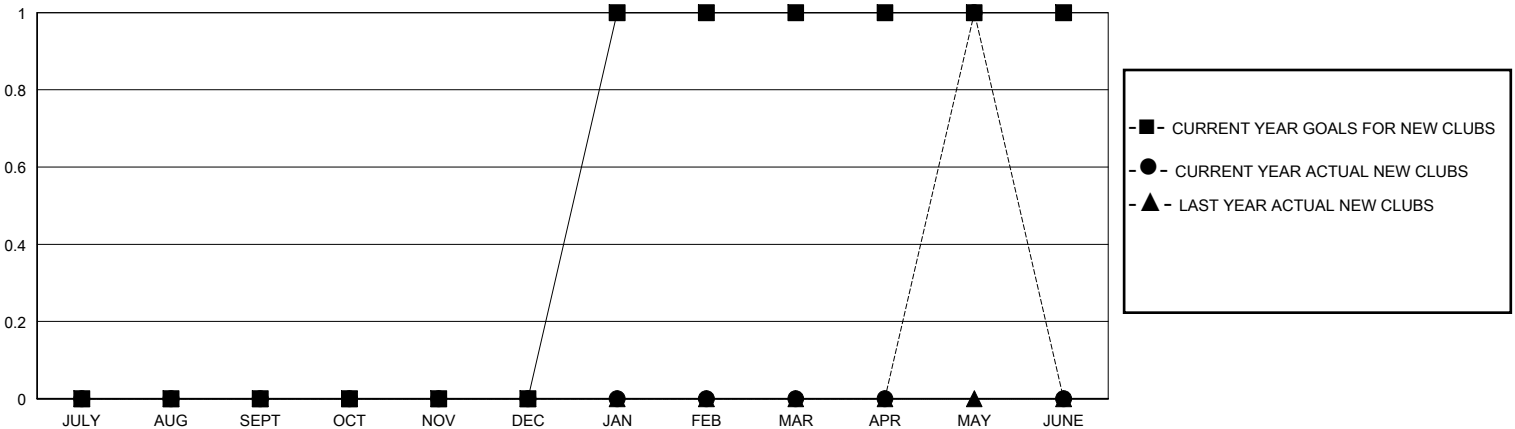
GMT:

LOCATION AUSTRALIA

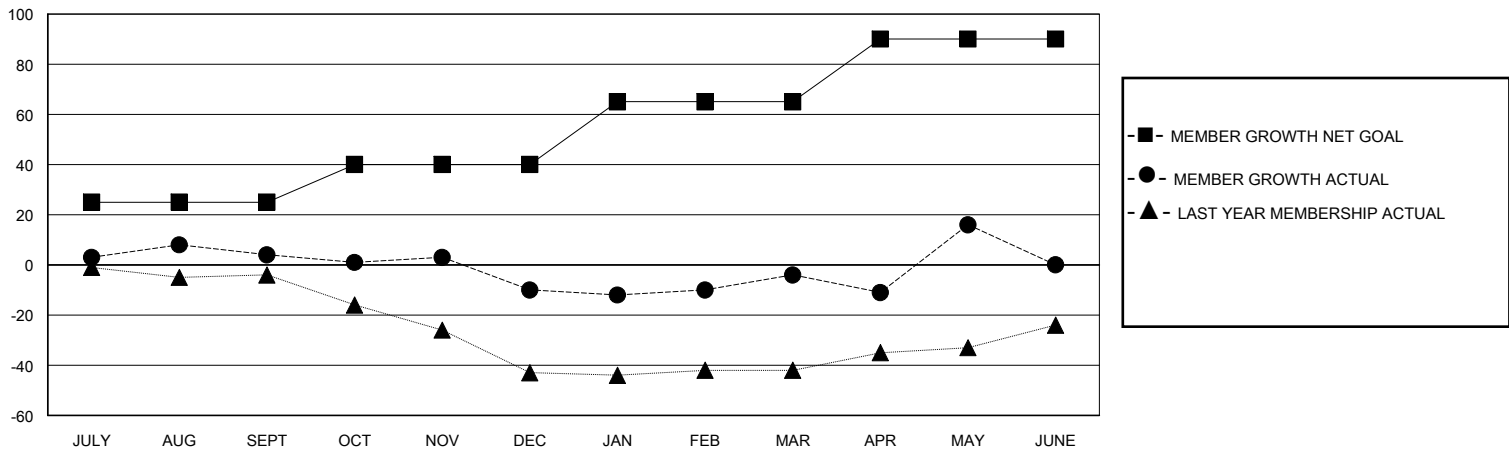
GMT CA

Clubs				Members			
RESULTS FOR 2023-2024				RESULTS FOR 2023-2024			
QUARTER	NEW CLUB GOAL	NEW CLUBS	DROPPED CLUBS	QUARTER	MEMBER GROWTH NET GOAL	MEMBER GROWTH ACTUAL	DROPPED MEMBERS ACTUAL (including transfers)
JULY/AUG/SEPT	0	0	0	JULY/AUG/SEPT	25	39	34
OCT/NOV/DEC	0	0	0	OCT/NOV/DEC	15	18	30
JAN/FEB/MAR	1	0	0	JAN/FEB/MAR	25	40	30
APR/MAY/JUNE	0	1	0	APR/MAY/JUNE	25	58	34

GOALS AND ACTUAL NEW CLUBS CUMULATIVE



GOALS AND ACTUAL MEMBERS CUMULATIVE



DROPPED CLUBS: 0	41 CLUBS OF 63 ADDED 1 OR MORE NEW MEMBERS	<u>GENDER DISTRIBUTION</u>	
<u>DROPPED MEMBERS</u>		MALE	539 (52.23%)
DECEASED	14	FEMALE	493 (47.77%)
CLUB CANCELLED	0	TOTAL FAMILY UNIT MEMBERS 178	
OTHER	113		
TOTAL	127	FAMILY MEMBERS PAYING HALF DUES 91	
CLICK HERE FOR CUMULATIVE MEMBERSHIP DATA			